

The following three examples give an indication of the capabilities and costs of different crane types.

Example 1 - Tadano TL-300E truck mounted crane

The rated capacity is 30 t. This magnitude of load can be lifted at a radius of approximately 3 m, where the maximum lifting height is approximately 50 m. The variation in lifting capacity with radius is given in Table 4.4. The product of the capacity and radius reduces by a factor of six as the radius increases from 3 m to 30 m. Hire rates were approximately £250 per day in 1996, for a minimum of one day. A smaller truck mounted crane (20 t) costs approximately £170 per day, whilst an 80 t crane costs approximately £600.

Table 4.4 *Lifting capacity of Tadano TL-300E*

Capacity* (t)	Radius (m)	Max. Height (m)
30	3	50
5.7 - 7.3	10	47
1.6 - 2.2	20	44
0.5	30	35

* capacity varies according to outrigger arrangement

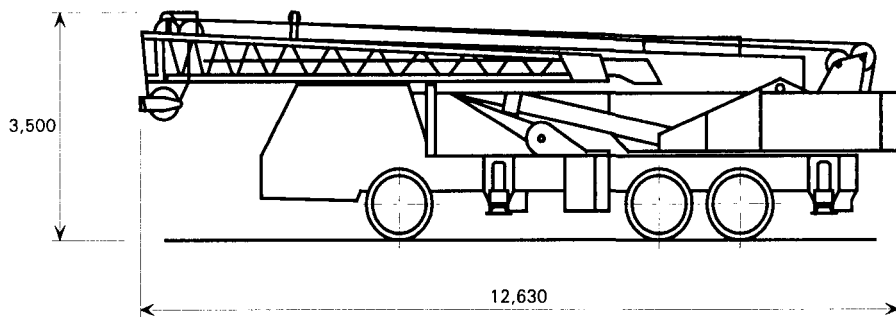


Figure 4.4 *Tadano TL-300E truck mounted crane*

Example 2 - NCK - Rapier Andes C41B crawler

The rated capacity is 40 t. This magnitude of load can be lifted at a radius of approximately 4 m. The maximum lifting height is approximately 44 m at this radius. The variation in lifting capacity with radius is given in Table 4.5. Hire rates in 1996 were approximately £950 per week (daily hire is not possible because of the time needed to set-up/dismantle the crane).

Table 4.5 *Lifting capacity of NCK-Rapier Andes C41B*

Capacity* (t)	Radius (m)	Max. Height (m)
37 - 41	4	44
9.1 - 10.6	10	43
3.0 - 4.5	20	40
1.2 - 1.6	30	33

* capacity varies according to boom length

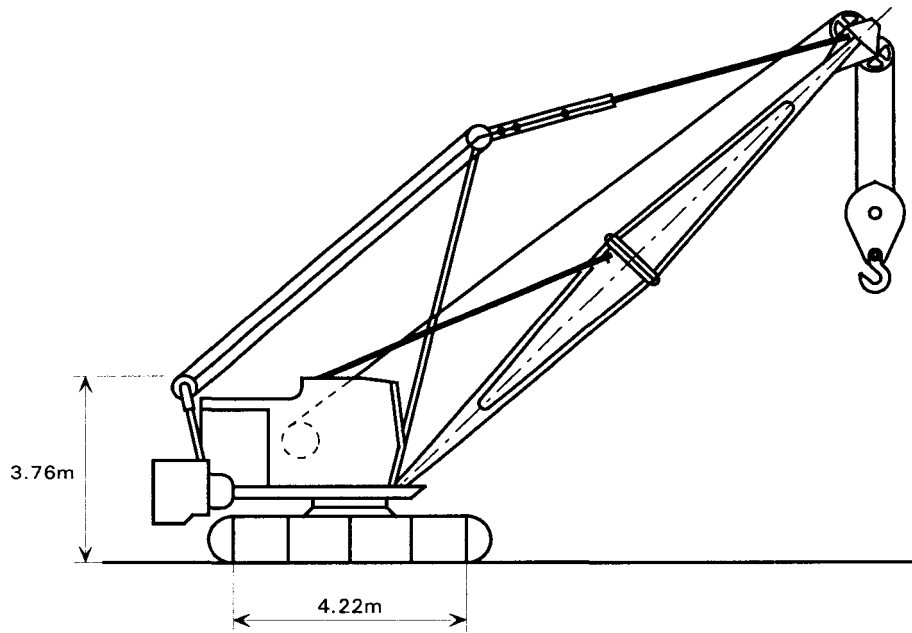


Figure 4.5 NCK - Rapier Andes C41B crawler crane

Example 3 - Peiner SK206/1 tower crane

The rated capacity of 12.5 t can be lifted at a minimum radius of approximately 3 m. Maximum lifting height is 59.9 m, independent of radius. The variation in lifting capacity with radius is given in Table 4.6; the capacity is constant within a 10 m radius. Hire rates were approximately £1450 per week in 1996.

Table 4.6 Lifting capacity of Peiner SK206/1

Capacity* (t)	Radius (m)	Max. Height (m)
12.5	3	59.9
12.5	10	59.9
9.2 - 11.9	20	59.9
5.7 - 7.5	30	59.9

* capacity depends on the jib arrangement